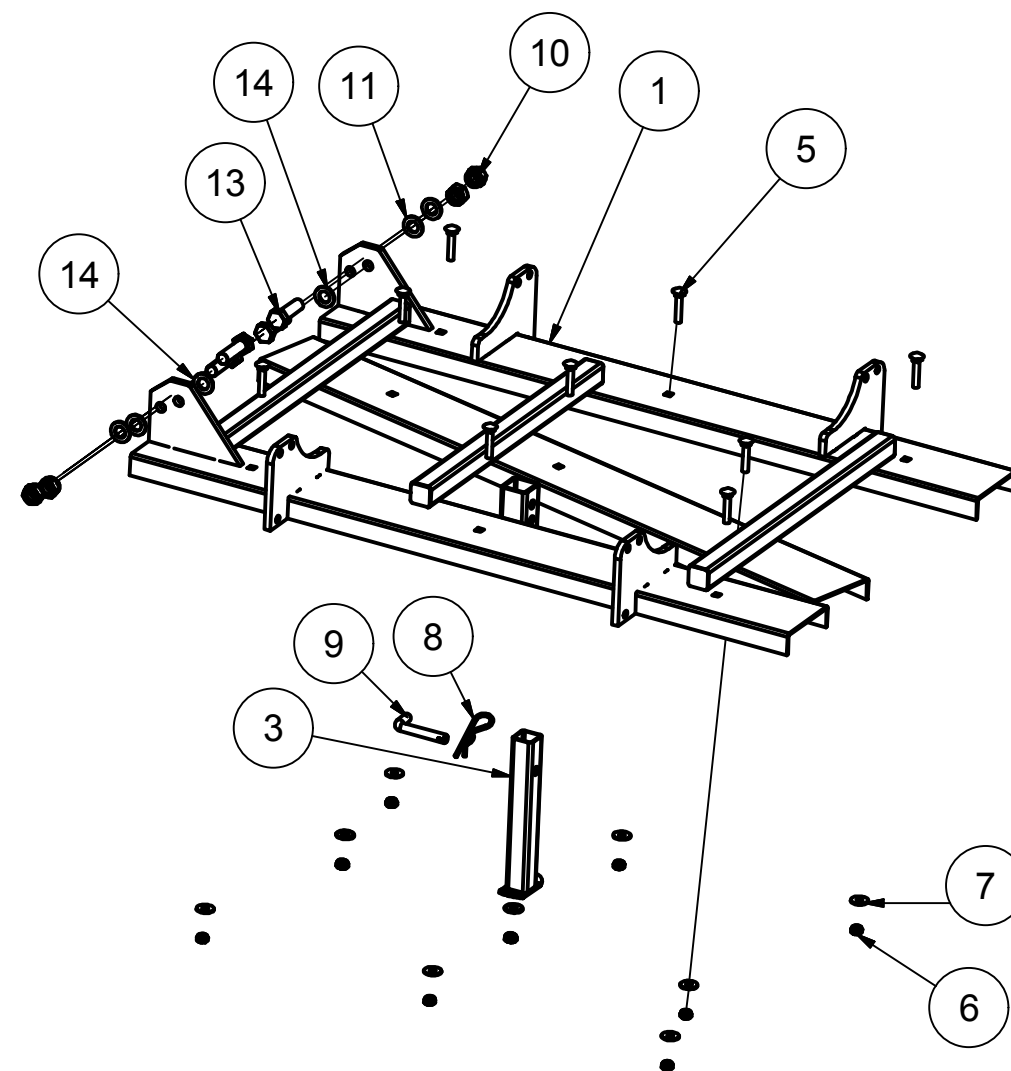
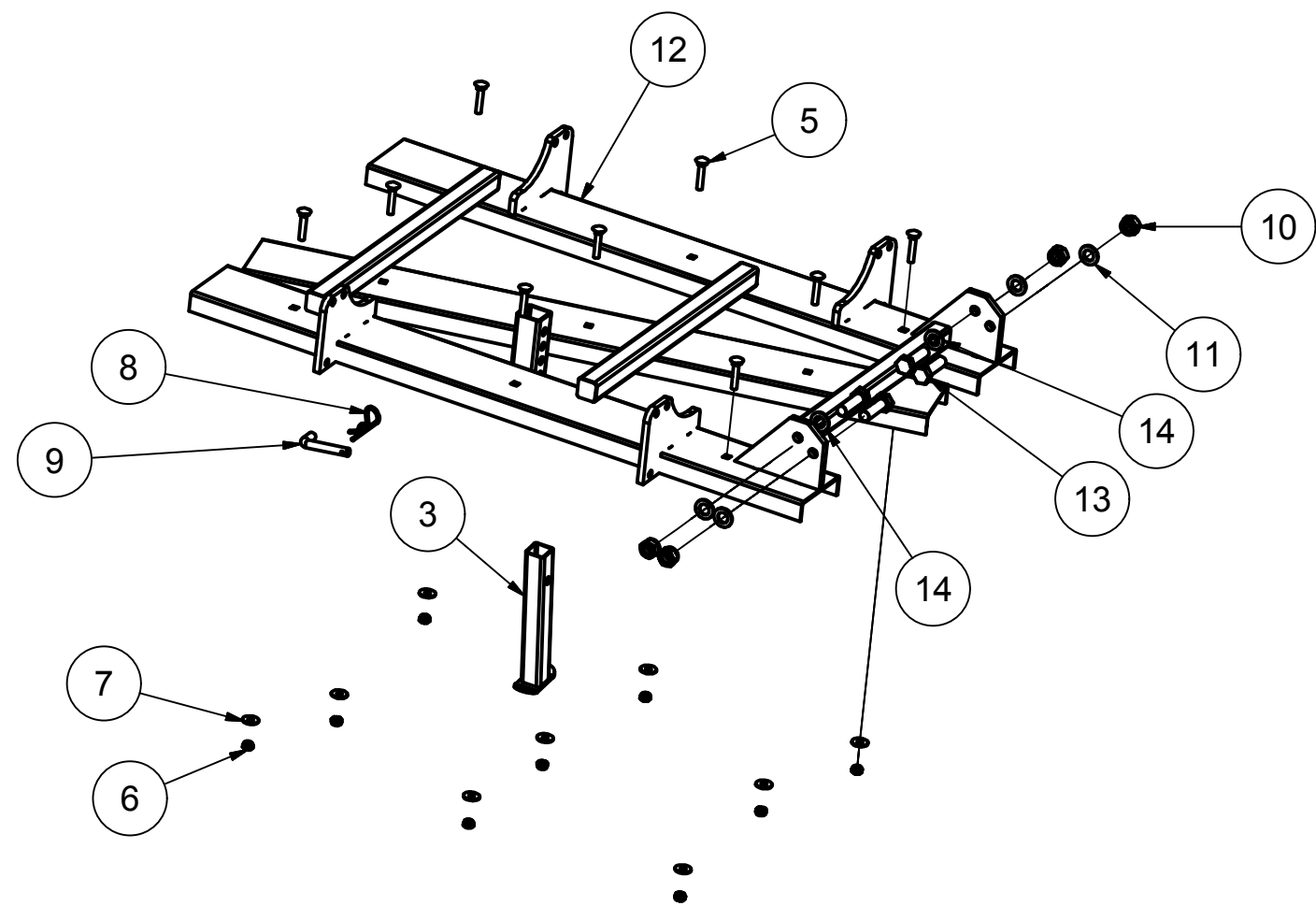


# V4900000 Turf Brush

BOM version:

X =See separate drawing

Position	Item Number	Description
V4900041	1	Middle arm 1800
V4900121	2	Extension profile for mast
V4900118	3	Mast profile for hitch
23006206	4	Double implement mounting pin
V4900129	5	Bush $\varnothing$ 28
22009120	6	Screw M24x60 8.8 FZB
22052011	7	M24 8.8 FZB DIN985-8 Prevailing Torque Hex Nut with polyami
23006207	8	Spike $\varnothing$ 12
V4900120	9	Pipe spacer
22002713	10	Mask. bolt M20x130 8.8 fzb
22058802	11	M20 140HV FZB DIN 125 ISO7090 Flat Washer with chamfer
22100024	12	M24 140HV HDG DIN125A/ ISO7089 Flat Washer without chamfer,
V4900045	13	Machine's foot
22052004	14	M10 6 FZB DIN985 Prevailing Torque Hex Nut with polyamid ins
22058410	15	M10 140HV FZB DIN 125 ISO7090 Flat Washer with chamfer
22052009	16	M20 6 FZB DIN985 Prevailing Torque Hex Nut with polyamid ins
22025306	17	M10x50 St FZB DIN603/555 Round Head Square Neck Bolt with he
23006026	18	$\varnothing$ 5x105 SS FZB Spring Cotter for Bolt
22052010	19	Lock nut M22 FZB

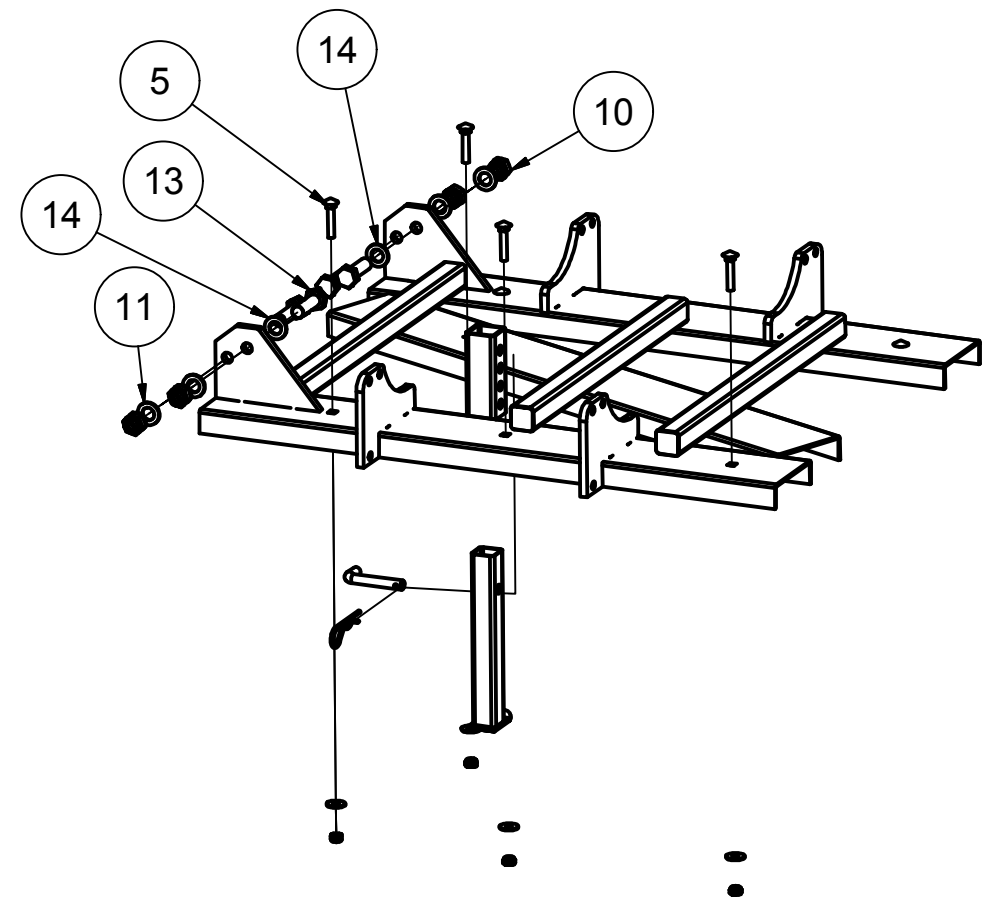
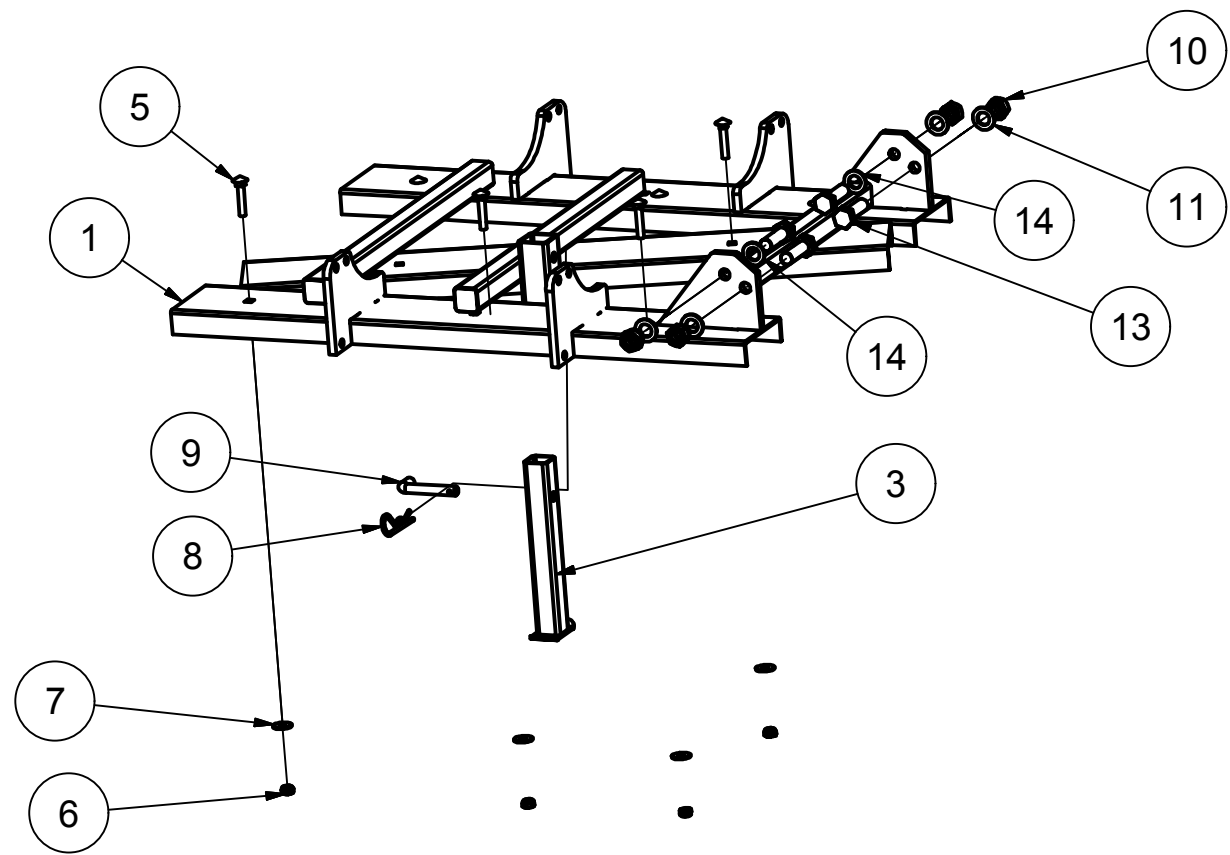


# V4900038 Optional side 1300

BOM version: V4900038

X =See separate drawing

Position	Item Number	Description
V4900047	1	Right side 1300
V4900045	3	Machine's foot
22025306	5	M10x50 St FZB DIN603/555 Round Head Square Neck Bolt with he
22052004	6	M10 6 FZB DIN985 Prevailing Torque Hex Nut with polyamid ins
22058700	7	M10 140HV FZB DIN9021A/ ISO7093 Flat Washer without chamfer,
23006026	8	ø5x105 SS FZB Spring Cotter for Bolt
23006207	9	Spike Ø12
22052009	10	M20 6 FZB DIN985 Prevailing Torque Hex Nut with polyamid ins
22058802	11	M20 140HV FZB DIN 125 ISO7090 Flat Washer with chamfer
V4900048	12	Left side 1300
22008906	13	Screw M20x55 8.8 FZB
22058802	14	M20 140HV FZB DIN 125 ISO7090 Flat Washer with chamfer



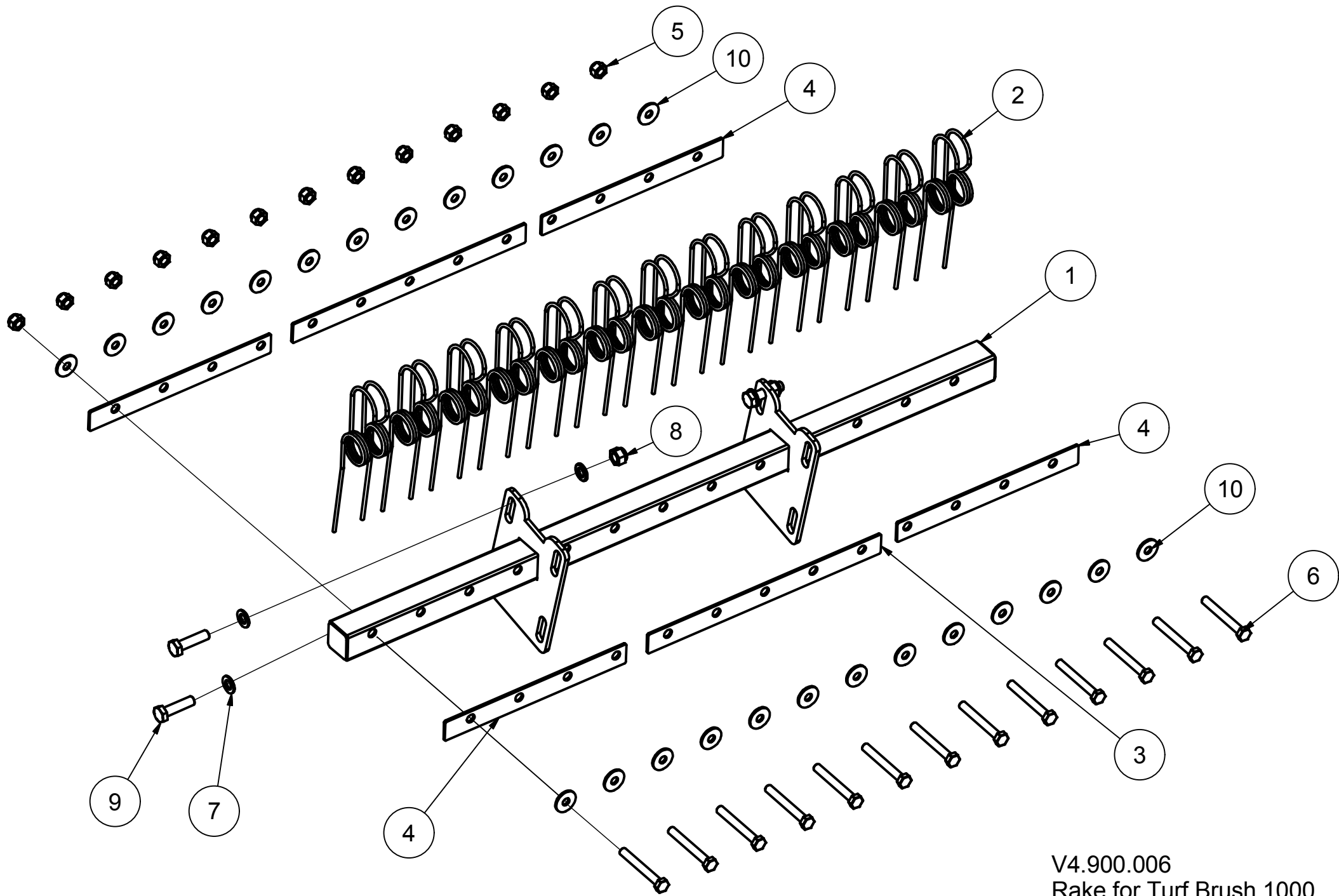
V4900039  
Optional side 1000

# V4900039    Optional side 1000

BOM version: V4900039

X =See separate drawing

Position	Item Number	Description
V4900043	1	Right side 1000
V4900045	3	Machine's foot
22025306	5	M10x50 St FZB DIN603/555 Round Head Square Neck Bolt with he
22052004	6	M10 6 FZB DIN985 Prevailing Torque Hex Nut with polyamid ins
22058700	7	M10 140HV FZB DIN9021A/ ISO7093 Flat Washer without chamfer,
23006026	8	ø5x105 SS FZB Spring Cotter for Bolt
23006207	9	Spike Ø12
22052009	10	M20 6 FZB DIN985 Prevailing Torque Hex Nut with polyamid ins
22058802	11	M20 140HV FZB DIN 125 ISO7090 Flat Washer with chamfer
V4900040	12	Left side 1000
22008906	13	Screw M20x55 8.8 FZB
22058802	14	M20 140HV FZB DIN 125 ISO7090 Flat Washer with chamfer



V4.900.006  
Rake for Turf Brush 1000

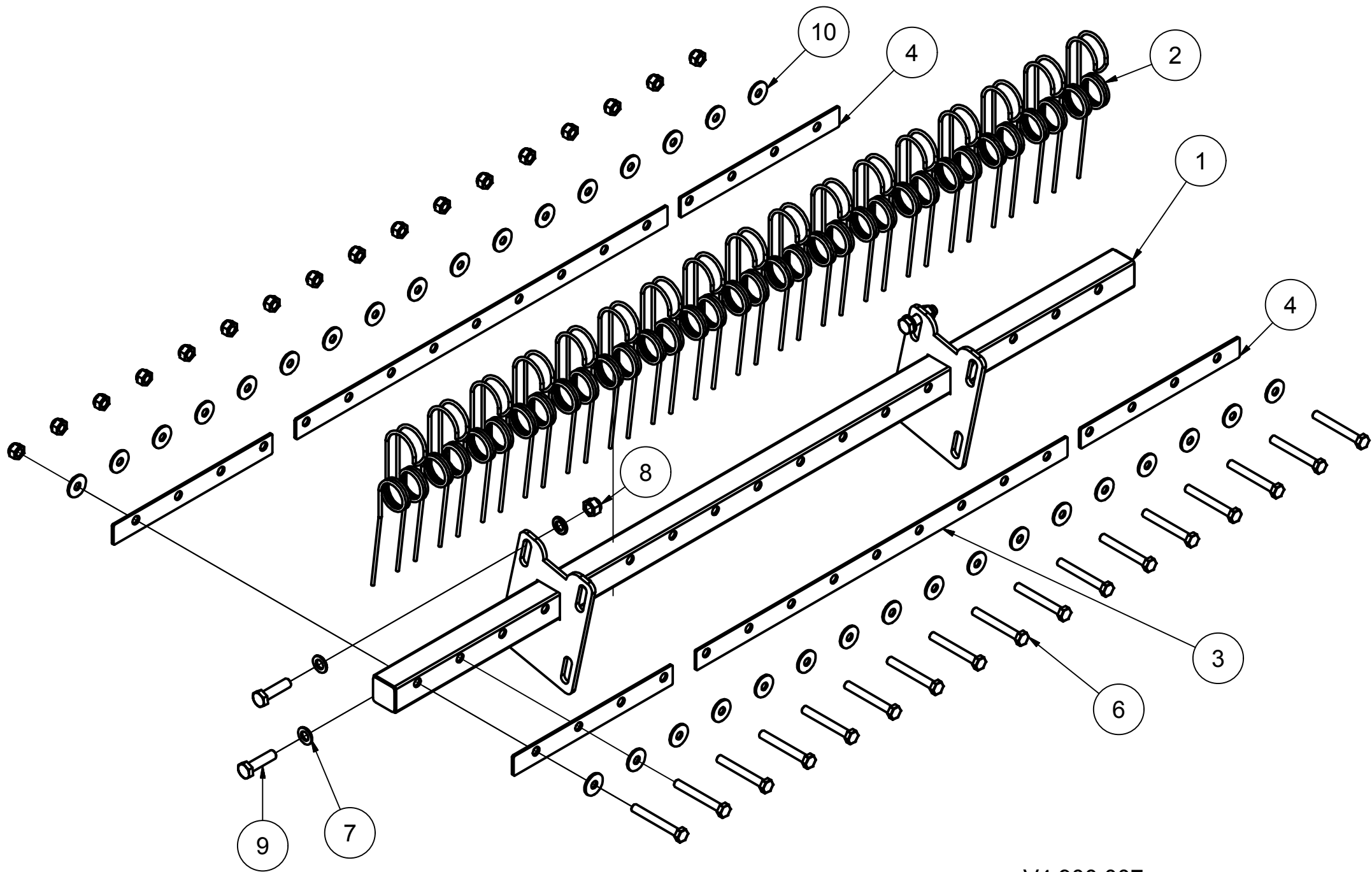
# V4900006 Rake for Turf Brush 1000

BOM versic V4900006

↳ =See separate drawin

Position	Item Numk	Description
V4900056	1	Tube for arm spring 1000
V4900135	2	Double arm spring for Turf Brush
V4900145	3	Middle plate for fixing arm spring 1000
V4900140	4	Small plate for fixing arm spring
22052004	5	M10 6 FZB DIN985 Prevailing Torque Hex Nut with polyamid ins
22002238	6	M10x80 8.8 FZB DIN931 Hex Cap Screw
22058610	7	M12 140HV FZB DIN 125 ISO7090 Flat Washer with chamfer
22052005	8	M12 6 FZB DIN985 Prevailing Torque Hex Nut with polyamid ins
22002300	9	M12x45 8.8 FZB DIN931 Hex Cap Screw
22058700	10	M10 140HV FZB DIN9021A/ ISO7093 Flat Washer without chamfer,





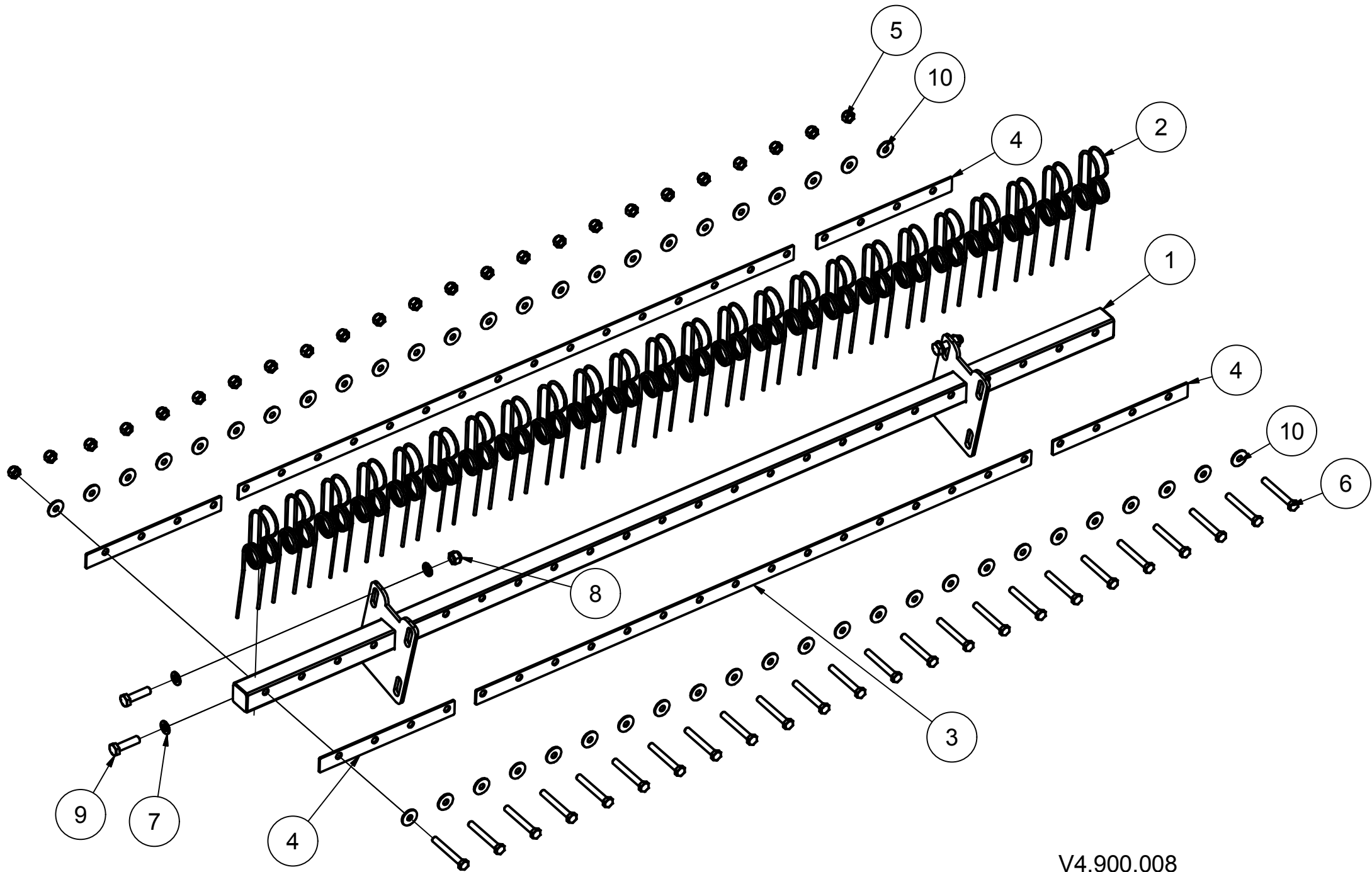
V4.900.007  
Rake for Turf Brush 1300

# V4900007 Rake for Turf Brush 1300

BOM version: V4900007

X =See separate drawing

Position	Item Number	Description
V4900056	1	Tube for arm spring 1000
V4900135	2	Double arm spring for Turf Brush
V4900145	3	Middle plate for fixing arm spring 1000
V4900140	4	Small plate for fixing arm spring
22052004	5	M10 6 FZB DIN985 Prevailing Torque Hex Nut with polyamid ins
22002238	6	M10x80 8.8 FZB DIN931 Hex Cap Screw
22058610	7	M12 140HV FZB DIN 125 ISO7090 Flat Washer with chamfer
22052005	8	M12 6 FZB DIN985 Prevailing Torque Hex Nut with polyamid ins
22002300	9	M12x45 8.8 FZB DIN931 Hex Cap Screw
22058700	10	M10 140HV FZB DIN9021A/ ISO7093 Flat Washer without chamfer,



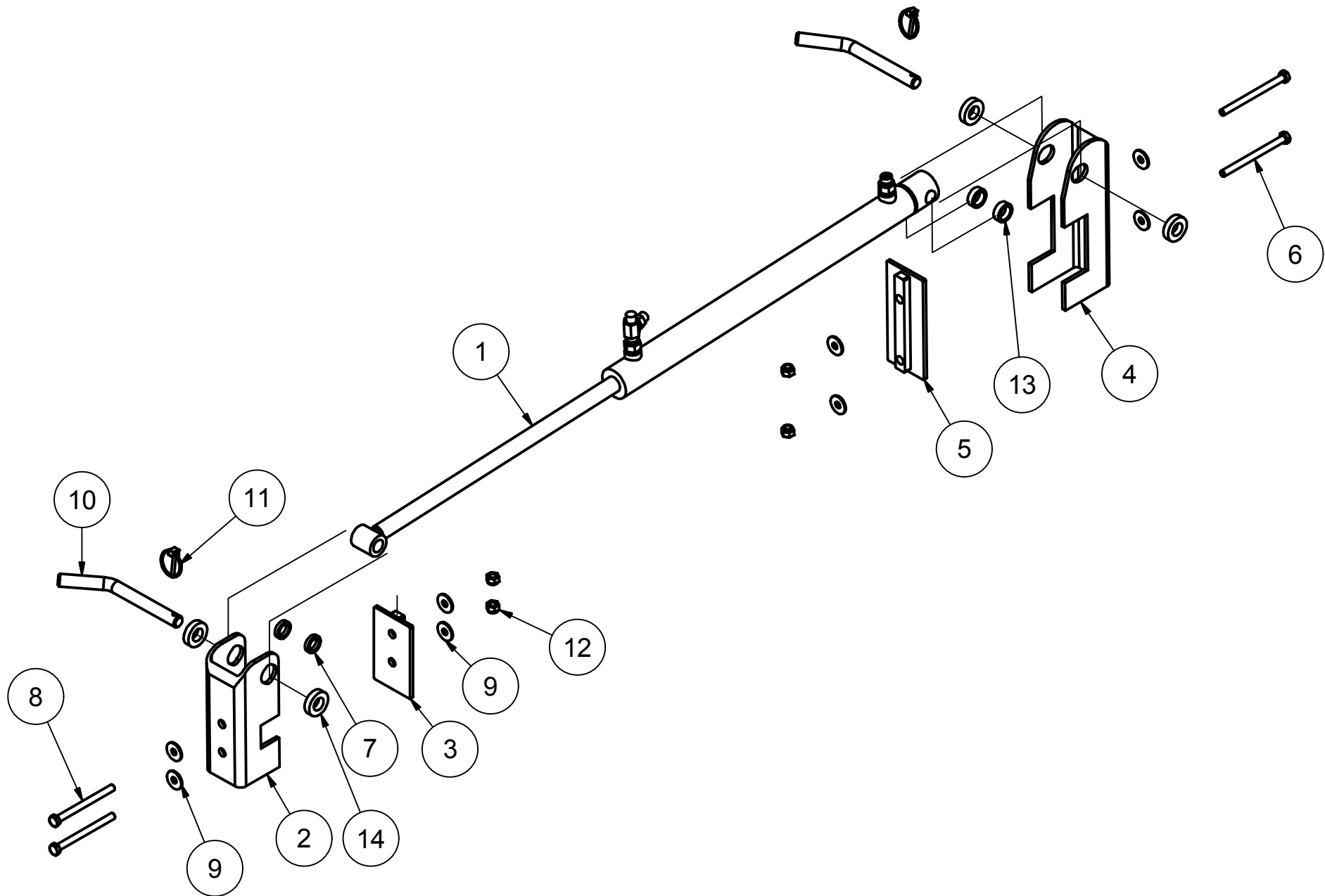
V4.900.008  
Rake for Turf Brush 1800

# V4900008 Rake for Turf Brush 1800

BOM version: V4900008

X =See separate drawing

Position	Item Number	Description
V4900054	1	Tube for arm spring
V4900135	2	Double arm spring for Turf Brush
V4900139	3	Middle plate for fixing arm spring
V4900140	4	Small plate for fixing arm spring
22052004	5	M10 6 FZB DIN985 Prevailing Torque Hex Nut with polyamid ins
22002238	6	M10x80 8.8 FZB DIN931 Hex Cap Screw
22058610	7	M12 140HV FZB DIN 125 ISO7090 Flat Washer with chamfer
22052005	8	M12 6 FZB DIN985 Prevailing Torque Hex Nut with polyamid ins
22002300	9	M12x45 8.8 FZB DIN931 Hex Cap Screw
22058700	10	M10 140HV FZB DIN9021A/ ISO7093 Flat Washer without chamfer,



V4.900.009  
Set hydraulic optional for Turf Brush

# V4900009 Set hydraulic optional for Turf Brush

BOM version: V4900009

X =See separate drawing

Position	Item Number	Description
V4900011	1	Hydraulic set for artificial grass field
V4900204	2	Small bracket for cylinder
V4900051	3	Reinforcement plate for small bracket
V4900201	4	Large bracket for fixing cylinder
V4900052	5	Reinforcement plate for large bracket
22002314	6	Stålbolt M12x140 FZB
V4900200	7	Small bush for cylinder
22002312	8	M12x120 8.8 FZB DIN931 Hex Cap Screw
22058610	9	M12 140HV FZB DIN 125 ISO7090 Flat Washer with chamfer
23006210	10	Spike Ø19
23006000	11	Ø4,5x33x35 SS FZB Spring Cotter for bolt
22052005	12	M12 6 FZB DIN985 Prevailing Torque Hex Nut with polyamid ins
V4900202	13	Bush for cylinder
V4900208	14	Large bush for cylinder



Sjækel D 5/16" galv



Vare information

Produktområder

Varenr.	1562-221008
Navn	Sjækel D 5/16" galv
Køll	10
Vægt	0,047 kg
Stregkode	5700030132713
D mm	8
Løftekapacitet kg	180
S mm	32
Stift diameter mm	8
W mm	16
d former	5/16

# V4900005 Packed loose KIT

BOM version: BOM05104895

X =See separate drawing

Position	Item Number	Description
	22027055	Chain shackle FZB
	22027058	Chain Ø8 mm FZB